



# Center for Small Fruit and WSU



- Capacity- Human and Facilities
- Emerging Issues
- Funding Sources (in state)
- Necessity for Regional Partnerships

Doug Walsh, Coordinator,  
Integrated Pest Management



# Capacity- Human and Facilities



Lynell Tanigoshi, WSU Mt Vernon. IPM on Blueberries, Raspberries, etc.



David James, WSU Prosser. Biological Control Wine Grape & Butterflies.



Doug Walsh, WSU Prosser. IPM on Wine and Juice grapes. Pesticide Registration

All three have joint Research and Extension Appointments



# Human Capacity- Extension



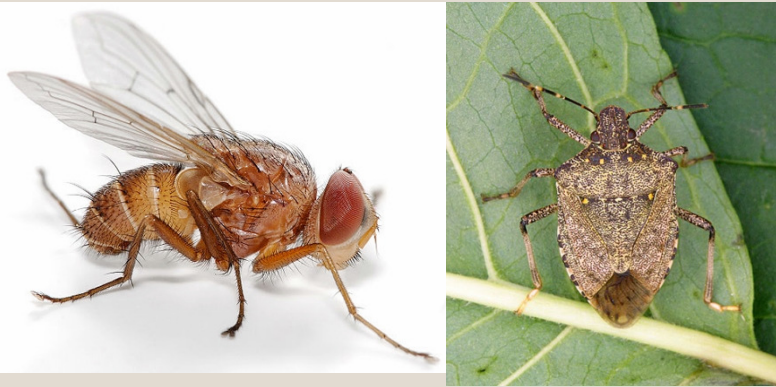
- Don McMoran, Skagit County
- Gwen Hoheisel, Benton County
- Todd Murray, Skagit County
- Brad Gaoloch, WSU West Seattle
- Carrie Foss, WSU Puyallup
- Colleen Burrows, Whatcom County
- Kim Patten, Pacific County
- Others? (no offense for not including them)





# Emerging Entomology Issues

## Managing Invasive Species



Attempt to reassemble IPM programs on crops impacted by these invasive species



## Managing Vector Species



To slow the spread of pathogens to crop plants

WSU's core entomology mission is to produce stable IPM systems for the growers we serve while reducing the use of synthetic inputs including insecticides.



# Emerging Entomology Issues





# Funding Sources, Local to Washington



- WSU has received (approximately) the following amounts from the Washington State Commodity Commissions in 2014
- Blueberry, \$68,000; Strawberry, \$188,000; Wine grape, \$150,000
- Washington Wine Tax, \$450,000; Concord Grape \$180,000
- Washington State Commission on Pesticide Registration, \$350,000
- WSU also distributes in-house competitive “starter grants” CAHNRS “Emerging Issues”; VP for Research PDS (proposal development stimulus) Grants range from \$50,000 to \$80,000





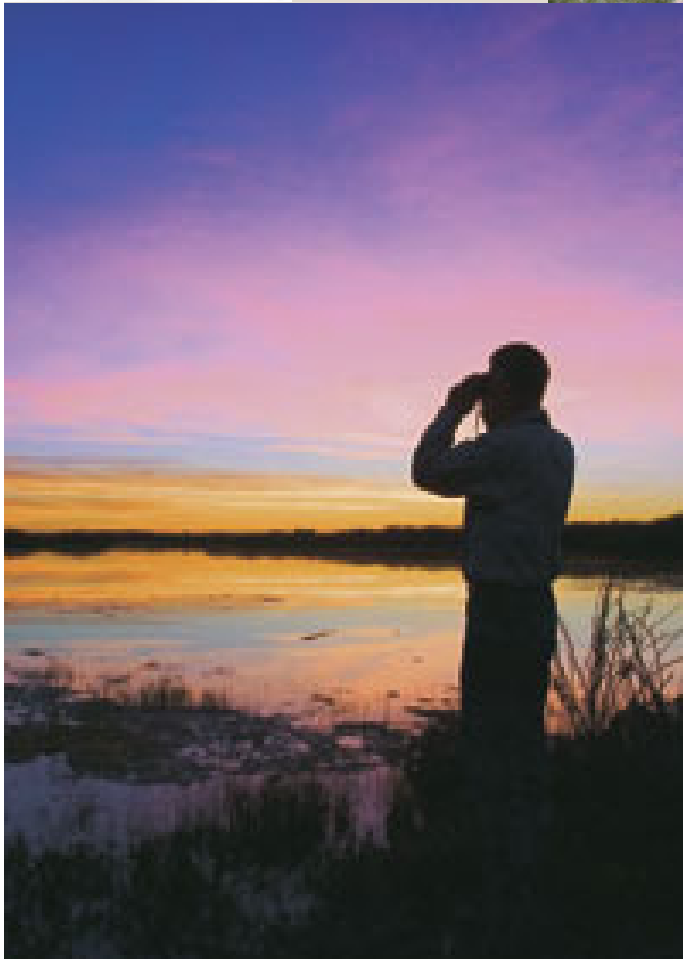
# Funding Sources, Local to Washington



- WSU has received (approximately) the following amounts from the Washington State Commodity Commissions in 2014
- Blueberry, \$68,000; Strawberry, \$188,000; Wine grape, \$150,000
- Washington Wine Tax, \$450,000; Concord Grape \$180,000
- Washington State Commission on Pesticide Registration, \$350,000
- WSU also distributes in-house competitive “starter grants” CAHNRS “Emerging Issues”; VP for Research PDS (proposal development stimulus) Grants range from \$50,000 to \$80,000



# Necessity for Regional Partnerships



- A lesson learned by the invasion of the PNW by *D. suzukii* and BMSB is that exotic pests don't recognize state lines.
- The PNW Center for Small Fruit Research should build synergy across the whole region as we work together on behalf of our stakeholders.